

11/8/2024



TOWN OF SOUTHBOROUGH

Planning Board

Application for a Scenic Road Stonewall or Tree Removal

In accordance with Massachusetts General Laws Chapter 40, §15C permit from the Planning Board of the Southborough Zoning Code.

Name of Applicant(s): National Grid (Hazard Tree Program)

Address of Applicant(s): 939 Southbridge St, Worcester, MA 01610

Telephone No: 508-860-6920 Cell No: _____

Email Address: Lucas.Fiske@Nationalgrid.com

Location of Tree to be Removed See Attached spreadsheet dated 10/24

Describe the reasons a tree should be removed and benefit to the Town _____

Hazardous Trees pose a threat to the public and the power grid

Zoning District: Res A and other areas

Plan Prepared by: Don Crocker- Davey Tree Arborist for National Grid

Address: National Grid 939 Southbridge St, Worcester, MA 01610

Telephone No _____ Cell No: 413-265-1369

Email Address: Donald.crocker@Nationalgrid.com

Date of Plan: Spreadsheet dated 10/2024

Submittal Requirements

- 2 copies of the plan indicating the Trees to be removed/trimmed
- An application fee (See Fee Schedule). Should the Planning Board require the plan be

reviewed by the Town's consulting engineer, the applicant will be required to pay this cost.

This application is submitted on 11/8/2024

Signature: [Signature]

Title: Manager Vegetation Operations

Any material (in addition to that included with the Application Form) that will be referred to by the Applicant (or the Applicant's representatives) at any public hearing or public meeting must be submitted to the Planning Department at least 7 days prior to such hearing or meeting to ensure adequate and proper review by the Board and accessibility to the public. Any material submitted later than this deadline may, at the Board's discretion, constitute a constructive request by the Applicant for a continuation of the hearing if, in the opinion of the Board, the Board, Town staff, or the public have not had adequate time to appropriately consider such material. **Applicants should note that this additional material includes amended plans, renderings, visual displays, models, etc., that may have been prepared after the Application Form was filed and are expected to be used by the Applicant during a public hearing presentation.**

TOWN OF SOUTHBOROUGH



PLANNING BOARD

TOWN HOUSE · 17 COMMON STREET · SOUTHBOROUGH, MASSACHUSETTS 01772-1662
(508) 485-0710, ext. 3028 · FAX (508) 983-7752 · kquinn@southboroughma.com

PUBLIC HEARING NOTICE TREE REMOVAL HEARING

The Southborough Select Board as Tree Warden, under the requirements of the MGL, Chapter 87, Section 3, and the Southborough Planning Board, under the requirements of MGL Chapter 40, Section 15C, will hold a consolidated public hearing on **Tuesday, December 17, 2024, at 6:30 PM at the Southborough Town House, McAuliffe Hearing Room, 17 Common St., and via Zoom.**

National Grid has recommended 94 trees to be trimmed or removed for additional clearance to reduce tree outage problems affecting large numbers of customers served by these main lines. National Grid's Arborists have identified 94 town owned trees of various heights on the following streets: Northborough Rd, Parkerville Rd, Woodland Rd, Breakneck Hill Rd, Middle Rd, Lovers Lane, Flagg Rd and Latisquama Rd. The trees include 2 Arborvitae (13"-18" DBH), 9 Ash (12"- 36" DBH), 1 Beech (32" DBH), 10 Hickory (8"- 24" DBH), 1 Locust (12" DBH), 10 Maple (16"- 42" DBH), 34 Oak (13"- 45" DBH), and 27 Pine (18"- 38" DBH)

Each tree is posted. A complete list of the proposed tree removal locations, species, size and pictures can also be found at <https://www.southboroughma.gov/AgendaCenter/Planning-Board-29> or <https://www.southboroughma.gov/266/Tree-Hearings-Results-Work-Status>

Any person wishing to be heard should appear at the time and place designated. Those who wish to watch or participate remotely may do so by accessing the meeting link at:
<https://ma-Southborough.civicplus.com/674/Virtual-Meetings>.

Objection to the proposed removals may be made in writing prior to, or at the hearing.

Christopher Leroy
Tree Warden Designee

Meme Luttrell
Planning Board Chair

Please run this legal ad on **Tuesday, December 3, 2024, and Tuesday, December 10, 2024.**

Please bill: **National Grid (Mass Electric Company)**
939 Southbridge St.
Worcester, MA 01610

Phone: 508-860-6920
Email: Lucas.Fiske@Nationalgrid.com

Tree Warden Designee + Cliff Notes 10/2024

Ownership Key:
C/T = City or Town
P = Private
S = State
M = Municipal

Town of Southborough
Town-Owned Trees

nationalgrid

(A) = AGREE (D) = Disagree

Town of Southborough NE Hazard Tree Mitigation Program Hazard Tree Removal List Circuit #: 317W3, 317W4, 317W5										National Grid Report	National Grid	TW Designee Comments	Town Arborist Comments	Circuit	
TID	Number	Site ID	House #	Street Name	Location	Pole #	Owner	Dia.	# Stem	Species	Defect	Work Proposed			
	1	DC10	Lot	Northborough Rd	AF	7-6	T	22		Maple	Lean, weight to line, branch cavities with decay, more than 50% decline	Remove	A	Agree	317W3
	3	DC20	9	Parkerville Rd		101-100	T	38		Pine	More than 50% decline, weight over lines, wounds on trunk	Remove	IA	Agree	317W3
	4	DC20	9	Parkerville Rd		101-100	T	38		Pine	More than 50% decline, weight over lines, wounds on trunk	Remove	IA	Agree	317W3
	5	DC20	9	Parkerville Rd		100-99	T	38		Pine	More than 50% decline, weight over lines, wounds on trunk	Remove	A	Agree	317W3
	6	DC21	Lot	Parkerville Rd		100-99	T	34		Pine	Lean, weight over lines, more than 50% decline, multiple dead limbs, proximity to lines	Remove	A	Agree	317W3
	7	DC22	Lot	Parkerville Rd	AF	98-97	T	38		Pine	Lean, weight to line, more than 25% decline, cavity at base w/decay signs of insects in trunk	Remove	A	Agree	317W3
	8	DC22	Lot	Parkerville Rd	AF	98-97	T	38		Pine	Weight to line, weak union, remove 10" limb about 10" up going to lines	Trim	A	Agree	317W3
	9	DC22	Lot	Parkerville Rd	AF	98-97	T	36		Pine	Weight to line, more than 50% decline, remove 15" limb about 8" up going to lines	Trim	A	Agree	317W3
	10	DC23	Lot	Parkerville Rd		98-97	T	16		Maple	More than 75% decline, proximity to lines, cavities w/decay	Remove	A	Agree	317W3
	11	DC23	Lot	Parkerville Rd		98-97	T	24	2	Maple	More than 50% decline, proximity to lines, one lead dead, weight over lines	Remove	A	Agree	317W3
	12	DC23	Lot	Parkerville Rd		97-96	T	35		Pine	Weight over lines, proximity to lines, previous failure	Remove	A	Agree	317W3
	13	DC24	10	Parkerville Rd		96-95	T	38		Pine	Weight over lines, more than 50% decline, multiple dead limbs	Remove	A	Agree	317W3
	14	DC24	10	Parkerville Rd		96-95	T	38		Pine	Weight over lines, more than 75% one lead dead, multiple cavities w/decay	Remove	A	Agree	317W3
	15	DC24	10	Parkerville Rd		96-95	T	36		Pine	Weight over lines, one lead dead, codominant, multiple cavities w/decay	Remove	A	Agree	317W3
	16	DC25	53	Parkerville Rd		94-93	T	36		Ash	Almost dead	Remove	A	Agree	317W3
	17	DC26	23	Parkerville Rd		92-91	T	25	2	Pine	More than 75% decline, weight over lines, codominant w/included bark	Remove	A	Agree	317W3

After Viewing and Evaluating the Pines on this list on Parkerville Rd and talking w/line owners that these Pines have nut faults

CH

* See BACK

- A. Neighbors have voiced concerns about these trees
- b. Multi Problems
 - 1. location / Safety
- c. Structural health
- D. Winter damage - Retain / Needles - snow & ice, wind
- E. Oppressiveness - N.W. wind
- F. Shallow Root system, Soft + Wood Rot, insect Problems, Needle cast, included branch and leader attachment

Ownership Key:
C/T = City or Town
P = Private
S = State
M = Municipal

Town of Southborough
Town-Owned Trees

nationalgrid

Town of Southborough NE Hazard Tree Mitigation Program Hazard Tree Removal List Circuit #: 317W3, 317W4, 317W5											National Grid Report	National Grid	TW Designee Comments	Town Arborist Comments	Circuit
TID	Number	Site ID	House #	Street Name	Location	Pole #	Owner	Dia.	# Stem	Species	Defect	Work Proposed			
	18	DC26	23	Parkerville Rd		93-92	T	30		Pine	More than 75% decline, multiple cavities w/decline, signs of internal decay	Remove	A	Agree	317W3
	19	DC27	12	Parkerville Rd	AF	93-92	T	18	4	Maple	Large cavity in lead leaning to line. remove that lead only	Remove	A	Agree	317W3
	20	DC28	14	Parkerville Rd	AF	92-91	T	25		Pine	More than 75% decline, cavity at base	Remove	A	Agree	317W3
	21	DC28	14	Parkerville Rd	AF	92-91	T	38		Pine	Weight to line, more than 50% decline, codominant w/included bark	Remove	A	Agree	317W3
	22	DC28	14	Parkerville Rd	AF	92-91	T	25		Pine	More than 75% decline	Remove	A	Agree	317W3
	23	DC28	14	Parkerville Rd	AF	92-91	T	24		Pine	More than 75% decline	Remove	A	Agree	317W3
	24	DC29	25	Parkerville Rd		92-91	T	25	2	Pine	Weight over lines, more than 75% decline, one lead broke off, cavity at base w/decay	Remove	A	Agree	317W3
	25	DC29	25	Parkerville Rd		92-91	T	28	2	Pine	Weight over lines, more than 75% decline, one lead broke off w/decay	Remove	A	Agree	317W3
	26	DC29	25	Parkerville Rd		92-91	T	30		Pine	Weight over lines, more than 50% decline, codominant w/included bark	Remove	A	Agree	317W3
	27	DC29	25	Parkerville Rd		92-91	T	32		Pine	Weight over lines, more than 50% decline, codominant w/included bark	Remove	A	Agree	317W3
	28	DC29	25	Parkerville Rd		92-91	T	32		Pine	Weight over lines, more than 75% decline, cavities w/decay	Remove	A	Agree	317W3
	29	DC30	16	Parkerville Rd	AP	91	T	34		Pine	Weight to lines, more than 50% decline, multiple cracks up trunk w/decay	Remove	A	Agree	317W3
	30	DC31	20	Parkerville Rd		89-88	T	28		Pine	Weight over lines, cavity at base w/decay	Remove	A	Agree	317W3
	31	DC31	20	Parkerville Rd		89-88	T	30		Pine	Weight over lines, cavity at base w/decay, more than 50% decline, wounds w/dry rot, codominant w/included bark	Remove	A	Agree	317W3
	32	DC31	20	Parkerville Rd		89-88	T	28		Pine	Weight over lines, more than 75% decline, buried to deep, probable root damage	Remove	A	Agree	317W3
	33	DC32	24	Parkerville Rd		87-86	T	30		Oak	All the weight over lines, old branch scars w/decay, electrical burn scar at line level, signs of root damage from recent road/sidewalk construction	Remove	A	Agree	317W3

Handwritten signature

Handwritten initials

Ownership Key
C/T = City or Town
P = Private
S = State
M = Municipal

Town of Southborough
Town-Owned Trees

nationalgrid

Town of Southborough NE Hazard Tree Mitigation Program Hazard Tree Removal List Circuit #: 317W3, 317W4, 317W5											National Grid Report	National Grid	TW Designee Comments	Town Arborist Comments	Circuit
TID	Number	Site ID	House #	Street Name	Location	Pole #	Owner	Dia.	# Stem	Species	Defect	Work Proposed			
	35	DC33	28	Parkerville Rd		86-85	T	18		Hickory	Weight over lines, more than 75% decline, previous failure in one large branch now showing signs of decay, mushrooms on trunk indicating probably trunk decay	Remove	A	A	317W3
	36	DC33	28	Parkerville Rd		86-85	T	27		Oak	Lean, weight over lines. Remove 8" limb directly over lines	Trim	A	A	317W3
	37	DC33	28	Parkerville Rd		86-85	T	8		Hickory	More than 75% decline, large cavity at base w/decay	Remove	A	A	317W3
	38	DC33	28	Parkerville Rd		86-85	T	45		Oak	Lean, weight to lines/poles, more than 50% decline, multiple dead branches, internal decay w/significant decay	Remove	A	A	317W3
	39	DC34	39	Parkerville Rd		85-84	T	22		Oak	Lean, weight over lines, more than 75% decline, dead limbs	Remove	A	A	317W3
	40	DC35	30	Parkerville Rd		83-82	T	16		Oak	Heavy lean, weight over lines, multiple cavities, root damage visible	Remove	A	A	317W3
	41	DC35	30	Parkerville Rd		83-82	T	24		Oak	Heavy lean, all weight over lines, multiple dead branches, buried too deep backside, suspected root damage from construction	Remove	A	A	317W3
	42	DC35	30	Parkerville Rd		83-82	T	18		Oak	Heavy lean, weight over lines, more than 50% decline, cavity at base w/decay	Remove	A	A	317W3
	43	DC36	34	Parkerville Rd		82-81	T	27		Oak	Lean, weight over lines, more than 50% decline, large cavity at base w/decay	Remove	A	A	317W3
	44	DC37	Lot	Parkerville Rd		81-80	T	18		Oak	Lean, weight over lines, signs of boring insects, hollow area indicating internal decay, root flare injury	Remove	A	A	317W3
	45	DC37	Lot	Parkerville Rd		80-79	T	18		Oak	Lean, weight over lines, more than 75% decline, multiple cavities w/decay, wood pecker damage	Remove	A	A	317W3
	46	DC37	Lot	Parkerville Rd		80-79	T	18		Oak	Lean, weight over lines, more than 50% decline, wound ground to 12' up w/decay	Remove	A	A	317W3

CLT CGT

Ownership Key:
C/T = City or Town
P = Private
S = State
M = Municipal

Town of Southborough
Town-Owned Trees

nationalgrid

Town of Southborough NE Hazard Tree Mitigation Program Hazard Tree Removal List Circuit #: 317W3, 317W4, 317W5														
TID		National Grid Report												
Number	Site ID	House #	Street Name	Location	Pole #	Owner	Dia.	# Stem	Species	Defect	National Grid Work Proposed	TW Designee Comments	Town Arborist Comments	Circuit
47	DC40	Lot	Parkerville Rd		72-71	T	26		Oak	No root flare, buried too deep, more than 50% root system under black top, cavity near base w/decay	Remove	A	A	317W3
48	DC41	Lot	Parkerville Rd		71-70	T	36		Oak	Lean, weight over lines, construction wounds w/dry rot present, definite construction damage to roots, cavity ground level w/decay	Remove	A	A	317W3
49	DC42	Lot	Parkerville Rd	AF	71-70	T	30		Oak	More than 50% decline, no root flare, buried too deep, probable root damage from road construction	Remove	A	A	317W3
51	DC52	21	Woodland Rd		7-8	T	32		Beech	Remove 4" dead branch above lines	Trim	A	A	317W3
52	DC54	42	Woodland Rd		11-12	T	35		Ash	Lean, weight over lines, more than 50% decline	Remove	A	A	317W3
53	DC55	31	Woodland Rd		11-12	T	12		Hickory	Heavy lean, weight over lines, cavity w/decay at ground level	Remove	A	A	317W3
54	DC57	43	Woodland Rd		17-18	T	24		Ash	Weight over lines, More than 50% decline, borers present, wood pecker damage	Remove	A	A	317W3
55	DC60	59	Woodland Rd		24-26	T	22		Oak	Dead	Remove	A	A	317W3
56	DC61	Lot	Woodland Rd	AF	24-26	T	12		Locust	Cavity at base w/decay, more than 50% decline	Remove	A	A	317W3
57	DC62	Lot	Woodland Rd		26-27	T	13		Oak	Heavy lean, weight over lines, more than 75% decline	Remove	A	A	317W3
58	DC62	Lot	Woodland Rd		26-27	T	18		Oak	Heavy lean, weight over lines, more than 75% decline	Remove	A	A	317W3
60	DC63	Lot	Woodland Rd	AF	26-27	T	18	2	Maple	Lean, weight to lines, more than 50% decline, cavity w/decay	Remove	A	A	317W3
61	DC63	Lot	Woodland Rd	AF	26-27	T	32		Oak	Heavy lean, weight over lines, more than 75% decline, large cavity backside w/decay	Remove	A	A	317W3
63	DC64	Lot	Woodland Rd		27-29	T	30		Oak	Dead limbs over lines, remove 8", 6", 3" dead limbs	Trim	A	A	317W3
65	DC66	Lot	Woodland Rd		31-32	T	18		Maple	Lean, weight to lines, more than 50% decline, cavity in trunk w/decay	Remove	A	A	317W3
66	DC66	Lot	Woodland Rd		31-32	T	18	2	Maple	Remove lead to line that is almost dead	Trim	A	A	317W3
67	DC66	Lot	Woodland Rd		32-34	T	12	2	Ash	Dead	Remove	A	A	317W3

CL

CGT

Ownership Key
C/T = City or Town
P = Private
S = State
M = Municipal

Town of Southborough
Town-Owned Trees

nationalgrid

Town of Southborough NE Hazard Tree Mitigation Program Hazard Tree Removal List Circuit #: 317W3, 317W4, 317W5											National Grid Report	National Grid Work Proposed	TW Designee Comments	Town Arborist Comments	Circuit
TID	Number	Site ID	House #	Street Name	Location	Pole #	Owner	Dia.	# Stem	Species	Defect				
	68	DC66	Lot	Woodland Rd	AF	32-34	T	12		Ash	Lean, weight over lines, more than 75% decline, cavity at base w/decay	Remove	A	A	317W3
	69	DC66	Lot	Woodland Rd		32-34	T	24		Ash	Dead	Remove	A	A	317W3
	70	DC68	81	Woodland Rd		34-36	T	16		Oak	Dead	Remove	A	A	317W3
	71	DC69	Lot	Woodland Rd		34-36	T	24		Ash	Dead, large cavity at base w/decay	Remove	A	A	317W3
	77	DC71	96	Breakneck Hill Rd		45-44	T	18		Pine	Entangled in wires, bark peeling off ground to 4' up, decay present	Remove	A	A	317W3
	78	DC73	Lot	Middle Rd		52/3-52/4	T	25		Ash	Dead	Remove	A	A	317W4
											Weight over lines, root damage, large wound at base w/decay, half roots under pavement, signs of internal decay	Remove	A	A	317W4
	80	DC03	40	Lovers Lane		24-23	T	26		Oak	Weight over lines, more than 75% decline, multiple dead branches, water sprouts, decay in trunk, more than half roots under pavement	Remove	A	A	317W4
	81	DC04	36	Lovers Lane		22-21	T	28		Oak	Weight over lines, multiple cavities at base w/decay, Remove 8" limb and 4" limb directly over lines both are dead	Remove	A	A	317W4
	82	DC05	35	Lovers Lane		22-21	T	36		Oak	Remove 6" lead over lines back to union	Trim	A	A	317W4
	83	DC07	29	Lovers Lane		17/50-17	T	16		Oak	Lean into pole, weight over pole, more than 50% decline, root damage w/decay	Trim	A	A	317W4
	84	DC07	29	Lovers Lane		17/50-17	T	20		Hickory	Lean, weight over lines, more than 50% decline, root damage w/decay	Remove	A	A	317W4
	85	DC08	Lot	Lovers Lane		17-16/50	T	15		Hickory	Lean, weight over lines, more than 50% decline, root damage w/decay	Remove	A	A	317W4
	86	DC08	Lot	Lovers Lane		17-16/50	T	8		Hickory	90% decline, top dead	Remove	A	A	317W4
	88	DC09	22A	Lovers Lane		16-15/50	T	22		Hickory	More than 90% decline, decay at base	Remove	A	A	317W4
	89	DC10	22	Lovers Lane		15/50-15	T	13		Hickory	Lean, weight overlines, more than 75% decline, heavy vines	Remove	A	A	317W4
	90	DC10	22	Lovers Lane		15/50-15	T	15		Hickory	Remove 8" lead overlines, 50% decline	Trim	A	A	317W4
	91	DC10	22	Lovers Lane		15/50-15	T	14		Hickory	Lean, weight over lines, more than 50% decline, cavity at base w/decay	Remove	A	A	317W4
	93	DC15	Lot	Lovers Lane		12-11/50	T	22		Ash	Lean, weight over lines, more than 50% decline	Remove	(D) TRIM	Trim	317W4

CM

CGT

Ownership Key:
C/T = City or Town
P = Private
S = State
M = Municipal

Town of Southborough
Town-Owned Trees

nationalgrid

Town of Southborough NE Hazard Tree Mitigation Program Hazard Tree Removal List Circuit #: 317W3, 317W4, 317W5											National Grid Report	National Grid Work Proposed	TW Designee Comments	Town Arborist Comments	Circuit
TID Number	Site ID	House #	Street Name	Location	Pole #	Owner	Dia.	# Stem	Species	Defect					
96	DC18	5	Flagg Rd	AF	3-4	T	32		Oak	Lean, weight over lines, multiple mechanical damage w/decay present, more than 30% decline		Remove	A	A	317W4
97	DC18	5	Flagg Rd	AF	4-6	T	38		Oak	Remove 8" limb about 35' up back to union w/main limb, remove 12" limb about 30' up back to main trunk. Both directly over lines and 50% decline		Trim	A	A	317W4
99	DC22	14	Flagg Rd		12-14	T	13		Arbovitae	Dead		Remove	A	A	317W4
100	DC22	14	Flagg Rd		12-14	T	16		Arbovitae	More than 90% decline		Remove	A	A	317W4
101	DC22	14	Flagg Rd		12-14	T	24		Hickory	Weight over line, more than 75% decline	(D)	Remove	Trim	Trim	317W4
102	DC24	Lot	Flagg Rd	AF	17-18	T	24		Oak	Lean, weight to line, more than 75% decline, leaves seem to have stunted growth	(D)	Remove	Trim	Trim	317W4
103	DC24	Lot	Flagg Rd	AF	18-19	T	35		Oak	Lean, weight over line, more than 75% decline, previous failure, cavity w/decay		Remove	A	A	317W4
105	DC25	31	Flagg Rd	AF	19-20	T	36		Oak	Weight over line, more than 50% decline, cavity ground to 20' up w/decay, signs of insect and internal decay		Remove	A	A	317W4
106	DC26	Lot	Flagg Rd		20-21	T	38		Oak	Weight over line, more than 75% decline	(D)	Remove	Trim	Trim	317W4
107	DC33	38	Flagg Rd		28-29	T	24		Maple	Weight over line, more than 75% decline, cavity 8' up w/decay		Remove	A	A	317W4
108	DC34	Lot	Flagg Rd		30-31	T	25		Oak	Lean, weight over lines, cavity at base with decay and insect damage, multiple dead branches		Remove	A	A	317W4
109	DC39	73	Flagg Rd	AF	40-41	T	42		Oak	Remove 10" limb over line back to main trunk. Limb more than 75% decline		Trim	A	A	317W4
110	DC40	77	Flagg Rd	AF	42-43	T	42		Oak	Weight over lines, more than 75% decline, one lead broke off leaving large cavity w/ extensive decay		Remove	A	A	317W4
111	RK07	5	Ward Rd	AF	5-4	T	42		Maple	Extensive trunk decay		Remove	A	A	317W5
113		22	Lattisquama Rd		9-10	T	25		Maple	Cavities w/decay		Remove	A	A	

017

Town of Southborough
NE Hazard Tree Mitigation Program
Hazard Tree Removal List

Site ID	Tree #	Street Name	House #	Loc	Pole #	Dia.	Species	# Stems	Defect Condition	Work Proposed
DC10	1	Northborough Rd	Lot	AF	7-6	22	Maple		Lean, weight to line, branch cavities with decay, more than 50% decline	Remove



Site ID	Tree #	Street Name	House #	Loc	Pole #	Dia.	Species	# Stems	Defect Condition	Work Proposed
DC20	3	Parkerville Rd	9		101-100	38	Pine		More than 50% decline, weight over lines, wounds on trunk	Remove



Site ID	Tree #	Street Name	House #	Loc	Pole #	Dia.	Species	# Stems	Defect Condition	Work Proposed
DC20	4	Parkerville Rd	9		101-100	38	Pine		More than 50% decline, weight over lines, wounds on trunk	Remove



Site ID	Tree #	Street Name	House #	Loc	Pole #	Dia.	Species	# Stems	Defect Condition	Work Proposed
DC20	5	Parkerville Rd	9	AF	100-99	38	Pine		More than 50% decline, weight over lines, wounds on trunk	Remove



Site ID	Tree #	Street Name	House #	Loc	Pole #	Dia.	Species	# Stems	Defect Condition	Work Proposed
DC21	6	Parkerville Rd	Lot		100-99	34	Pine		Lean, weight over line, more than 50% decline, multiple dead limbs, proximity	Remove



Site ID	Tree #	Street Name	House #	Loc	Pole #	Dia.	Species	# Stems	Defect Condition	Work Proposed
DC22	7	Parkerville Rd	Lot	AF	98-97	38	Pine		Lean, weight to line, more than 25% decline, cavity at base w/decay, sign of insects in trunk	Remove



8/20/2024



Site ID	Tree #	Street Name	House #	Loc	Pole #	Dia.	Species	# Stems	Defect Condition	Work Proposed
DC22	8	Parkerville Rd	Lot	AF	98-97	38	Pine		Weight to line, weak union. Remove 10" limb about 10' up going to line	Trim



Site ID	Tree #	Street Name	House #	Loc	Pole #	Dia.	Species	# Stems	Defect Condition	Work Proposed
DC22	9	Parkerville Rd	Lot	AF	98-97	36	Pine		Weight to line, more than 50% decline, remove 15" limb about 8' up going to lines	Trim



Site ID	Tree #	Street Name	House #	Loc	Pole #	Dia.	Species	# Stems	Defect Condition	Work Proposed
DC23	10	Parkerville Rd	Lot		98-97	16	Maple		More than 75% decline, proximity to lines, cavities w/ decay	Remove



Site ID	Tree #	Street Name	House #	Loc	Pole #	Dia.	Species	# Stems	Defect Condition	Work Proposed
DC23	11	Parkerville Rd	Lot		98-97	24	Maple	2	More than 50% decline, proximity to lines, one lead dead, weight over lines	Remove



Site ID	Tree #	Street Name	House #	Loc	Pole #	Dia.	Species	# Stems	Defect Condition	Work Proposed
DC23	12	Parkerville Rd	Lot		97-96	35	Pine		Weight over lines, proximity to lines, previous failure	Remove



Site ID	Tree #	Street Name	House #	Loc	Pole #	Dia.	Species	# Stems	Defect Condition	Work Proposed
DC24	13	Parkerville Rd	10		96-95	38	Pine		Weight over lines, multiple dead limbs, more than 50% decline	Remove



Site ID	Tree #	Street Name	House #	Loc	Pole #	Dia.	Species	# Stems	Defect Condition	Work Proposed
DC24	14	Parkerville Rd	10		96-95	38	Pine		Weight over lines, more than 75% decline, one lead dead, multiple cavities w/decay	Remove



Site ID	Tree #	Street Name	House #	Loc	Pole #	Dia.	Species	# Stems	Defect Condition	Work Proposed
DC24	15	Parkerville Rd	10		96-95	36	Pine		Weight over lines, codominant, one lead dead, multiple cavities w/decay	Remove



Site ID	Tree #	Street Name	House #	Loc	Pole #	Dia.	Species	# Stems	Defect Condition	Work Proposed
DC25	16	Parkerville Rd	53		94-93	36	Ash		Almost dead	Remove



Site ID	Tree #	Street Name	House #	Loc	Pole #	Dia.	Species	# Stems	Defect Condition	Work Proposed
DC26	17	Parkerville Rd	23		93-92	25	Pine	2	Weight over lines, more than 75% decline, codominant w/included bark	Remove



Site ID	Tree #	Street Name	House #	Loc	Pole #	Dia.	Species	# Stems	Defect Condition	Work Proposed
DC26	18	Parkerville Rd	23		93-92	30	Pine		More than 75% decline, multiple cavities w/decay, signs of internal decay	Remove



Site ID	Tree #	Street Name	House #	Loc	Pole #	Dia.	Species	# Stems	Defect Condition	Work Proposed
DC27	19	Parkerville Rd	12	AF	93-92	18	Maple	4	Large cavity in lead leaning to line. remove that lead only	Remove



Site ID	Tree #	Street Name	House #	Loc	Pole #	Dia.	Species	# Stems	Defect Condition	Work Proposed
DC28	20	Parkerville Rd	14	AF	92-91	25	Pine		More than 75% decline, cavity at base	Remove



Site ID	Tree #	Street Name	House #	Loc	Pole #	Dia.	Species	# Stems	Defect Condition	Work Proposed
DC28	21	Parkerville Rd	14	AF	92-91	38	Pine		Weight to line, more than 50% decline, codominant w/included bark	Remove



Site ID	Tree #	Street Name	House #	Loc	Pole #	Dia.	Species	# Stems	Defect Condition	Work Proposed
DC28	22	Parkerville Rd	14	AF	92-91	25	Pine		More than 75% decline	Remove



Site ID	Tree #	Street Name	House #	Loc	Pole #	Dia.	Species	# Stems	Defect Condition	Work Proposed
DC28	23	Parkerville Rd	14	AF	92-91	24	Pine		More than 75% decline	Remove



Site ID	Tree #	Street Name	House #	Loc	Pole #	Dia.	Species	# Stems	Defect Condition	Work Proposed
DC29	24	Parkerville Rd	25		92-91	25	Pine	2	Weight over lines, more than 75% decline, one lead broken off, cavity at base w/decay	Remove



8/20/2024



Site ID	Tree #	Street Name	House #	Loc	Pole #	Dia.	Species	# Stems	Defect Condition	Work Proposed
DC29	25	Parkerville Rd	25		92-91	28	Pine	2	Weight over lines, more than 75% decline, one lead broken off, cavity at base with decay	Remove



8/20/2024



Site ID	Tree #	Street Name	House #	Loc	Pole #	Dia.	Species	# Stems	Defect Condition	Work Proposed
DC29	26	Parkerville Rd	25		92-91	30	Pine		Weight over lines, more than 50% decline, codominant w/included bark	Remove



Site ID	Tree #	Street Name	House #	Loc	Pole #	Dia.	Species	# Stems	Defect Condition	Work Proposed
DC29	27	Parkerville Rd	25		92-91	32	Pine		Weight over lines, more than 50% decline, codominant w/included bark	Remove



Site ID	Tree #	Street Name	House #	Loc	Pole #	Dia.	Species	# Stems	Defect Condition	Work Proposed
DC29	28	Parkerville Rd	25		92-91	32	Pine		Weight over lines, more than 75% decline, cavities with decay	Remove



Site ID	Tree #	Street Name	House #	Loc	Pole #	Dia.	Species	# Stems	Defect Condition	Work Proposed
DC30	29	Parkerville Rd	16	AP	91	34	Pine		Weight to lines, more than 50% decline, multiple cracks up trunk with decay	Remove



Site ID	Tree #	Street Name	House #	Loc	Pole #	Dia.	Species	# Stems	Defect Condition	Work Proposed
DC31	30	Parkerville Rd	20		89-88	28	Pine		Weight over lines, cavity at base w/decay	Remove



Site ID	Tree #	Street Name	House #	Loc	Pole #	Dia.	Species	# Stems	Defect Condition	Work Proposed
DC31	31	Parkerville Rd	20		89-88	30	Pine		Weight over lines, cavity at base w/decay, more than 50% decline, wounds w/dryrot, codominant w/included bark	Remove



Site ID	Tree #	Street Name	House #	Loc	Pole #	Dia.	Species	# Stems	Defect Condition	Work Proposed
DC31	32	Parkerville Rd	20		89-88	28	Pine		Weight over lines, more than 75% decline, buried to deep, probable root damage	Remove



Site ID	Tree #	Street Name	House #	Loc	Pole #	Dia.	Species	# Stems	Defect Condition	Work Proposed
DC32	33	Parkerville Rd	24		87-86	30	Oak		All weight over lines, old branch scars w/decay, electrical burn at line level, signs of root damage from recent walkway construction	Remove



8/20/2024



Site ID	Tree #	Street Name	House #	Loc	Pole #	Dia.	Species	# Stems	Defect Condition	Work Proposed
DC33	35	Parkerville Rd	28		86-85	18	Hickory		Weight over lines, more than 75% decline, previous failure in one large branch showing signs of decay, mushrooms on trunk indicating trunk decay	Remove



Site ID	Tree #	Street Name	House #	Loc	Pole #	Dia.	Species	# Stems	Defect Condition	Work Proposed
DC33	36	Parkerville Rd	28		86-85	27	Oak		Lean, weight over lines, remove 8" limb directly over lines	Trim



Site ID	Tree #	Street Name	House #	Loc	Pole #	Dia.	Species	# Stems	Defect Condition	Work Proposed
DC33	37	Parkerville Rd	28		86-85	8	Hickory		More than 75% decline, cavity at base w/decay	Remove



8/20/2024



Site ID	Tree #	Street Name	House #	Loc	Pole #	Dia.	Species	# Stems	Defect Condition	Work Proposed
DC33	38	Parkerville Rd	28		86-85	45	Oak		Lean, weight to lines, more than 50% decline, multiple dead branches, internal trunk decay	Remove



8/20/2024



Site ID	Tree #	Street Name	House #	Loc	Pole #	Dia.	Species	# Stems	Defect Condition	Work Proposed
DC34	39	Parkerville Rd	39		85-84	22	Oak		Lean, weight over lines, more than 75% decline, dead limbs	Remove



Site ID	Tree #	Street Name	House #	Loc	Pole #	Dia.	Species	# Stems	Defect Condition	Work Proposed
DC35	40	Parkerville Rd	30		83-82	16	Oak		Heavy lean, weight over lines, multiple cavities, root damage visible	Remove



8/20/2024



Site ID	Tree #	Street Name	House #	Loc	Pole #	Dia.	Species	# Stems	Defect Condition	Work Proposed
DC35	41	Parkerville Rd	30		83-82	24	Oak		Heavy lean, all weight over line, multiple dead branches, buried to deep backside, suspected root damage from construction	Remove



8/20/2024



Site ID	Tree #	Street Name	House #	Loc	Pole #	Dia.	Species	# Stems	Defect Condition	Work Proposed
DC35	42	Parkerville Rd	30		83-82	18	Oak		Heavy lean, weight over lines, more than 50% decline, cavity at base w/decay	Remove



8/20/2024



Site ID	Tree #	Street Name	House #	Loc	Pole #	Dia.	Species	# Stems	Defect Condition	Work Proposed
DC36	43	Parkerville Rd	34		82-81	27	Oak		Lean, weight over lines, more than 50% decline, large cavity at base w/decay	Remove



8/20/2024



Site ID	Tree #	Street Name	House #	Loc	Pole #	Dia.	Species	# Stems	Defect Condition	Work Proposed
DC37	44	Parkerville Rd	Lot		81-80	18	Oak		Lean, weight over lines, signs of boring insects, hollow area indicating internal decay, root flare injury	Remove



8/20/2024



Site ID	Tree #	Street Name	House #	Loc	Pole #	Dia.	Species	# Stems	Defect Condition	Work Proposed
DC37	45	Parkerville Rd	Lot		80-79	18	Oak		Lean, weight over lines, more than 75% decline, multiple cavities w/decay, wood pecker damage	Remove



8/20/2024



Site ID	Tree #	Street Name	House #	Loc	Pole #	Dia.	Species	# Stems	Defect Condition	Work Proposed
DC37	46	Parkerville Rd	Lot		80-79	18	Oak		Lean, weight to line, more than 50% decline, wound ground to 12' up w/decay	Remove



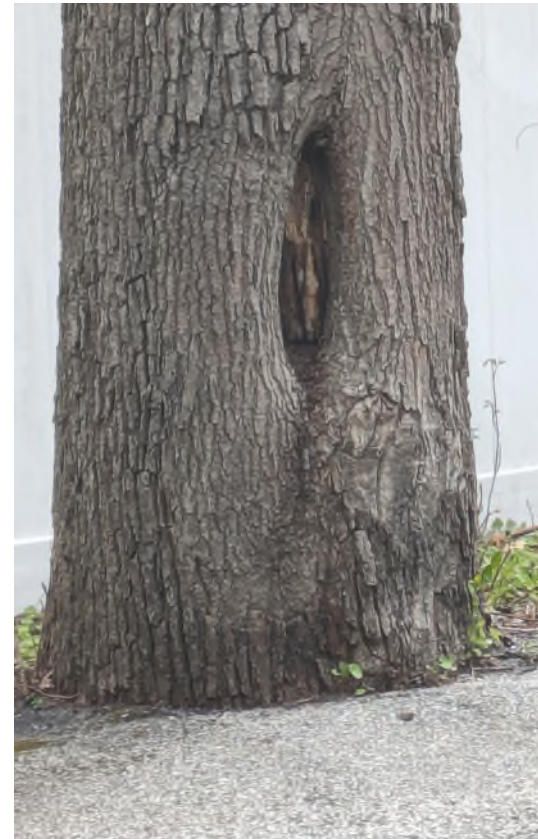
8/20/2022



Site ID	Tree #	Street Name	House #	Loc	Pole #	Dia.	Species	# Stems	Defect Condition	Work Proposed
DC40	47	Parkerville Rd	Lot		72-71	26	Oak		No root flare, buried too deep, more than 50% of root system under blacktop, cavity near base w/decay	Remove



8/20/2024



Site ID	Tree #	Street Name	House #	Loc	Pole #	Dia.	Species	# Stems	Defect Condition	Work Proposed
DC41	48	Parkerville Rd	Lot		71-70	36	Oak		Lean, weight over lines, construction wounds w/dry rot, definite construction damage to root system, cavity ground level w/decay	Remove



8/20/2024



Site ID	Tree #	Street Name	House #	Loc	Pole #	Dia.	Species	# Stems	Defect Condition	Work Proposed
DC42	49	Parkerville Rd	Lot	AF	71-70	30	Oak		More than 50% decline, no root flare, buried too deep, probable root damage from road construction	Remove



8/20/2024



Site ID	Tree #	Street Name	House #	Loc	Pole #	Dia.	Species	# Stems	Defect Condition	Work Proposed
DC52	51	Woodland Rd	21		7-8	32	Beech		Remove 4" dead limb over lines	Remove



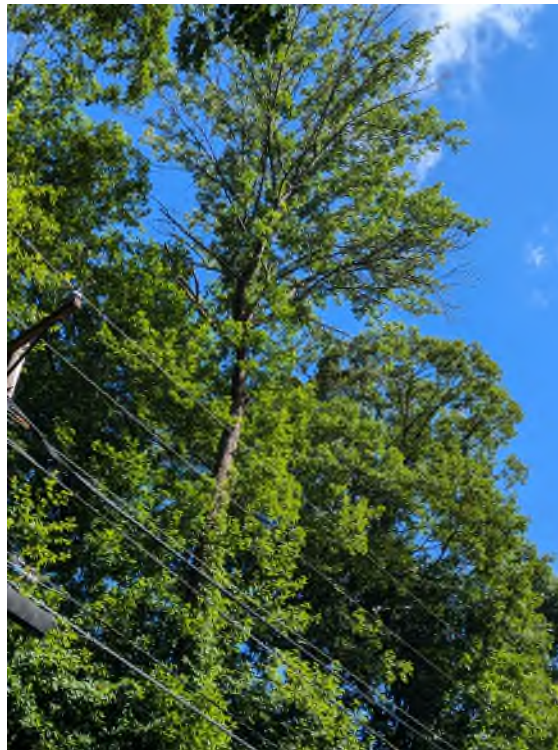
Site ID	Tree #	Street Name	House #	Loc	Pole #	Dia.	Species	# Stems	Defect Condition	Work Proposed
DC54	52	Woodland Rd	42		11-12	35	Ash		Lean, weight over line, more than 50% decline	Remove



Site ID	Tree #	Street Name	House #	Loc	Pole #	Dia.	Species	# Stems	Defect Condition	Work Proposed
DC55	53	Woodland Rd	31		11-12	12	Hickory		Heavy lean, weight over lines, cavity w/decay at ground level	Remove



Site ID	Tree #	Street Name	House #	Loc	Pole #	Dia.	Species	# Stems	Defect Condition	Work Proposed
DC57	54	Woodland Rd	43		17-18	24	Ash		Weight over lines, more than 50% decline, borers present, wood pecker damage	Remove



Site ID	Tree #	Street Name	House #	Loc	Pole #	Dia.	Species	# Stems	Defect Condition	Work Proposed
DC60	55	Woodland Rd	59		24-26	22	Oak		Dead	Remove



Site ID	Tree #	Street Name	House #	Loc	Pole #	Dia.	Species	# Stems	Defect Condition	Work Proposed
DC61	56	Woodland Rd	Lot	AF	24-26	12	Locust		Cavity at base w/decay, more than 50% decline	Remove



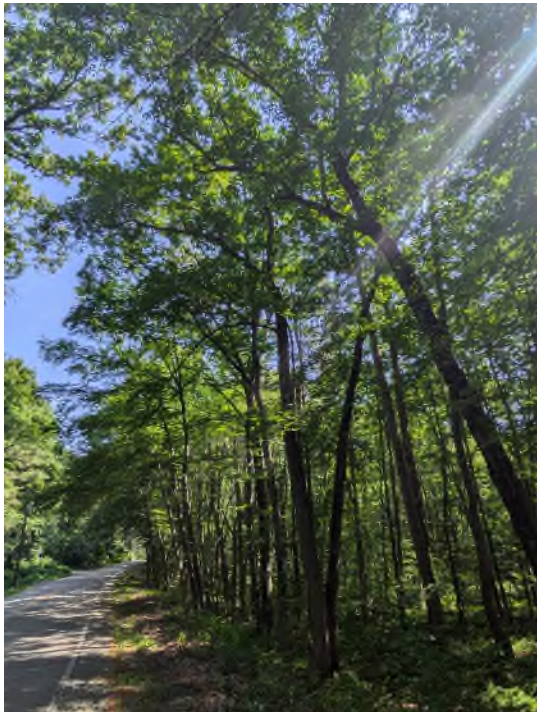
Site ID	Tree #	Street Name	House #	Loc	Pole #	Dia.	Species	# Stems	Defect Condition	Work Proposed
DC62	57	Woodland Rd	Lot		26-27	13	Oak		Heavy lean, weight over lines, more than 75% decline	Remove



Site ID	Tree #	Street Name	House #	Loc	Pole #	Dia.	Species	# Stems	Defect Condition	Work Proposed
DC62	58	Woodland Rd	Lot		26-27	18	Oak		Heavy lean, weight over lines, more than 75% decline	Remove



Site ID	Tree #	Street Name	House #	Loc	Pole #	Dia.	Species	# Stems	Defect Condition	Work Proposed
DC63	60	Woodland Rd	Lot	AF	26-27	18	Maple	2	Lean, weight to line, more than 50% decline, cavity w/decay	Remove



Site ID	Tree #	Street Name	House #	Loc	Pole #	Dia.	Species	# Stems	Defect Condition	Work Proposed
DC63	61	Woodland Rd	Lot	AF	26-27	32	Oak		Heavy lean, weight over lines, more than 75% decline, large cavity backside w/decay	Remove



Site ID	Tree #	Street Name	House #	Loc	Pole #	Dia.	Species	# Stems	Defect Condition	Work Proposed
DC64	63	Woodland Rd	Lot		27-29	30	Oak		Dead limbs over lines. Remove 8", 6", 3" dead limbs	Trim



Site ID	Tree #	Street Name	House #	Loc	Pole #	Dia.	Species	# Stems	Defect Condition	Work Proposed
DC66	65	Woodland Rd	Lot		31-32	18	Maple		Lean, weight to line, more than 50% decline, cavity in trunk w/decay	Remove



Site ID	Tree #	Street Name	House #	Loc	Pole #	Dia.	Species	# Stems	Defect Condition	Work Proposed
DC66	66	Woodland Rd	Lot		31-32	18	Maple	2	Remove lead to line that is almost dead	Trim



Site ID	Tree #	Street Name	House #	Loc	Pole #	Dia.	Species	# Stems	Defect Condition	Work Proposed
DC66	67	Woodland Rd	Lot		32-34	12	Ash	2	Dead	Remove



Site ID	Tree #	Street Name	House #	Loc	Pole #	Dia.	Species	# Stems	Defect Condition	Work Proposed
DC66	68	Woodland Rd	Lot		32-34	12	Ash		Lean, weight over line, more than 75% decline, cavity at base w/ decay	Remove



Site ID	Tree #	Street Name	House #	Loc	Pole #	Dia.	Species	# Stems	Defect Condition	Work Proposed
DC66	69	Woodland Rd	Lot		32-34	24	Ash		Dead	Remove



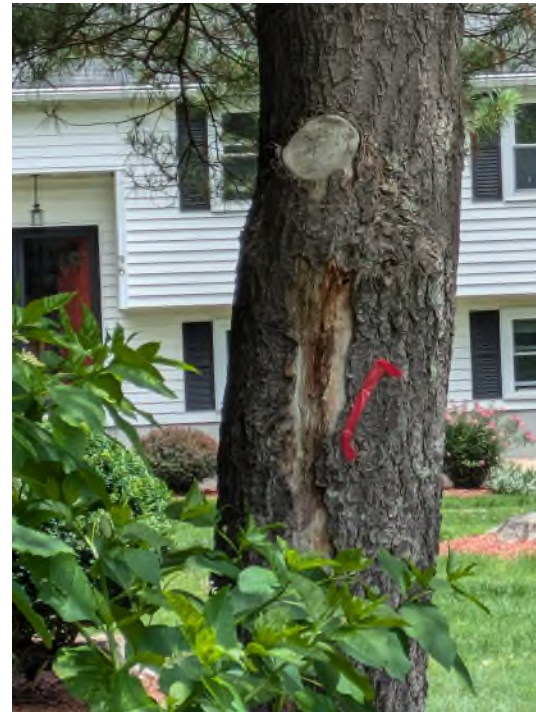
Site ID	Tree #	Street Name	House #	Loc	Pole #	Dia.	Species	# Stems	Defect Condition	Work Proposed
DC68	70	Woodland Rd	81	AF	34-36	16	Oak		Dead	Remove



Site ID	Tree #	Street Name	House #	Loc	Pole #	Dia.	Species	# Stems	Defect Condition	Work Proposed
DC69	71	Woodland Rd	Lot		34-36	24	Ash		Dead, large cavity at base with decay	Remove



Site ID	Tree #	Street Name	House #	Loc	Pole #	Dia.	Species	# Stems	Defect Condition	Work Proposed
DC71	77	Breakneck Hill Rd	96		45-44	18	Pine		Entangled in the wires, bark peeling off ground to 4' up w/decay present	Remove



Site ID	Tree #	Street Name	House #	Loc	Pole #	Dia.	Species	# Stems	Defect Condition	Work Proposed
DC73	78	Middle Rd	Lot		52/3- 52/4	25	Ash		Dead	Remove



Site ID	Tree #	Street Name	House #	Loc	Pole #	Dia.	Species	# Stems	Defect Condition	Work Proposed
DC03	80	Lovers Lane	40		24-23	26	Oak		Weight over lines, root damage, large wound at base w/decay, half roots under pavement, signs of internal decay	Remove



Site ID	Tree #	Street Name	House #	Loc	Pole #	Dia.	Species	# Stems	Defect Condition	Work Proposed
DC04	81	Lovers Lane	36		22-21	28	Oak		Weight over lines, more than 75% decline, multiple dead branches, water sprouts, trunk decay, more than half the roots under pavement	Remove



Site ID	Tree #	Street Name	House #	Loc	Pole #	Dia.	Species	# Stems	Defect Condition	Work Proposed
DC05	82	Lovers Lane	35		22-21	36	Oak		Weight over lines, multiple cavities w/decay. Remove 6" and 4" limb directly over lines. Both are dead	Trim



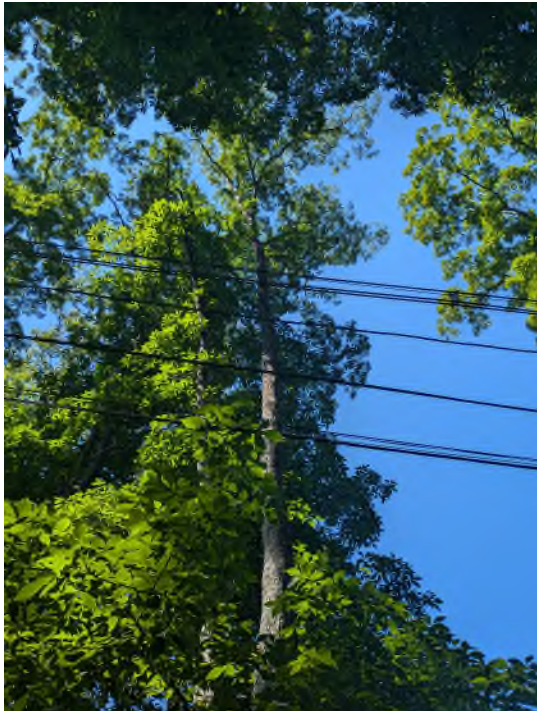
Site ID	Tree #	Street Name	House #	Loc	Pole #	Dia.	Species	# Stems	Defect Condition	Work Proposed
DC07	83	Lovers Lane	29		17/50-17	16	Oak		Remove 6" limb back to union	Trim



Site ID	Tree #	Street Name	House #	Loc	Pole #	Dia.	Species	# Stems	Defect Condition	Work Proposed
DC07	84	Lovers Lane	29		17/50-17	20	Hickory		Lean into pole, weight over pole, more than 50% decline, root damage w/decay	Remove



Site ID	Tree #	Street Name	House #	Loc	Pole #	Dia.	Species	# Stems	Defect Condition	Work Proposed
DC08	85	Lovers Lane	Lot		17-16/50	15	Hickory		Lean, weight over lines, more than 50% decline, root damage w/decay	Remove



Site ID	Tree #	Street Name	House #	Loc	Pole #	Dia.	Species	# Stems	Defect Condition	Work Proposed
DC08	86	Lovers Lane	Lot		17-16/50	8	Hickory		90% decline, top dead, decay at base	Remove



Site ID	Tree #	Street Name	House #	Loc	Pole #	Dia.	Species	# Stems	Defect Condition	Work Proposed
DC09	88	Lovers Lane	22A		16-15/50	22	Hickory		More than 90% decline, decay at base	Remove



Site ID	Tree #	Street Name	House #	Loc	Pole #	Dia.	Species	# Stems	Defect Condition	Work Proposed
DC10	89	Lovers Lane	22		15/50-15	13	Hickory		Lean, weight over lines, more than 75% decline, heavy vines	Remove



Site ID	Tree #	Street Name	House #	Loc	Pole #	Dia.	Species	# Stems	Defect Condition	Work Proposed
DC10	90	Lovers Lane	22		15/50-15	15	Hickory		Remove 8" limb over lines, 50% decline	Trim



Site ID	Tree #	Street Name	House #	Loc	Pole #	Dia.	Species	# Stems	Defect Condition	Work Proposed
DC10	91	Lovers Lane	22		15/50-15	14	Hickory		Lean, weight over lines, more than 50% decline, cavity at base w/decay	Remove



Site ID	Tree #	Street Name	House #	Loc	Pole #	Dia.	Species	# Stems	Defect Condition	Work Proposed
DC15	93	Lovers Lane	Lot		12-11/50	22	Ash		Lean, weight over lines, more than 50% decline	Remove



Site ID	Tree #	Street Name	House #	Loc	Pole #	Dia.	Species	# Stems	Defect Condition	Work Proposed
DC18	96	Flagg Rd	5	AF	3-4	32	Oak		Lean, weight over lines, multiple mechanical damage w/decay present, more than 30% decline	Remove



Site ID	Tree #	Street Name	House #	Loc	Pole #	Dia.	Species	# Stems	Defect Condition	Work Proposed
DC18	97	Flagg Rd	5	AF	4-6	38	Oak		Remove 8" limb about 35' up back to union with main limb, remove 12" limb about 30' up back to main trunk. Both directly over line and about 50% decline	Trim



Site ID	Tree #	Street Name	House #	Loc	Pole #	Dia.	Species	# Stems	Defect Condition	Work Proposed
DC22	99	Flagg Rd	14		12-14	13	Arbovitae		Dead	Remove



Site ID	Tree #	Street Name	House #	Loc	Pole #	Dia.	Species	# Stems	Defect Condition	Work Proposed
DC22	100	Flagg Rd	14		12-14	16	Arbovitae		More than 90% decline	Remove



Site ID	Tree #	Street Name	House #	Loc	Pole #	Dia.	Species	# Stems	Defect Condition	Work Proposed
DC22	101	Flagg Rd	14		12-14	24	Hickory		Weight over line, more than 75% decline	Remove



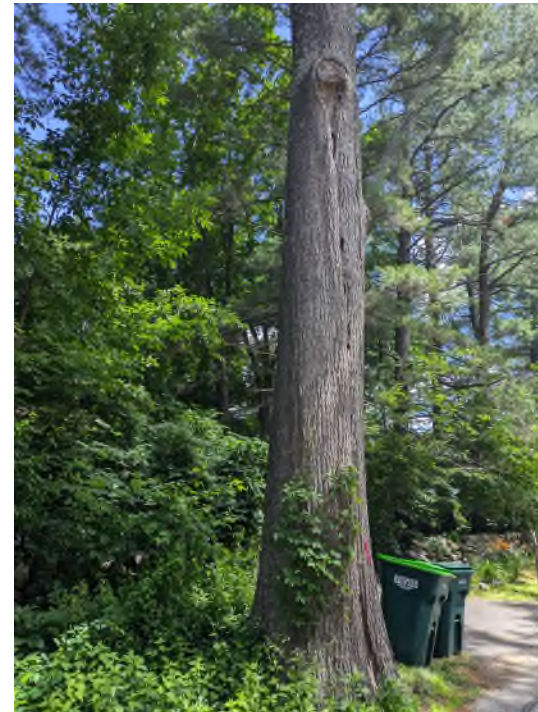
Site ID	Tree #	Street Name	House #	Loc	Pole #	Dia.	Species	# Stems	Defect Condition	Work Proposed
DC24	102	Flagg Rd	Lot	AF	17-18	24	Oak		Lean, weight to line, more than 75% decline, leaves seem to have stunted growth	Remove



Site ID	Tree #	Street Name	House #	Loc	Pole #	Dia.	Species	# Stems	Defect Condition	Work Proposed
DC24	103	Flagg Rd	Lot	AF	18-19	35	Oak		Lean, weight over lines, more than 75% decline, previous failure, cavity w/decay	Remove



Site ID	Tree #	Street Name	House #	Loc	Pole #	Dia.	Species	# Stems	Defect Condition	Work Proposed
DC25	105	Flagg Rd	31	AF	19-20	36	Oak		Weight over lines, more than 50% decline, cavity from ground to 20' up. Signs of insect and internal decay	Remove



Site ID	Tree #	Street Name	House #	Loc	Pole #	Dia.	Species	# Stems	Defect Condition	Work Proposed
DC26	106	Flagg Rd	Lot		20-21	38	Oak		Weight over lines, more than 75% decline	Remove



Site ID	Tree #	Street Name	House #	Loc	Pole #	Dia.	Species	# Stems	Defect Condition	Work Proposed
DC33	107	Flagg Rd	38		28-29	24	Maple		Weight over line, more than 75% decline, cavity 8' up w/decay	Remove



Site ID	Tree #	Street Name	House #	Loc	Pole #	Dia.	Species	# Stems	Defect Condition	Work Proposed
DC34	108	Flagg Rd	Lot		30-31	25	Oak		Lean, weight to line, cavity at base w/decay and insect damage, multiple dead branches	Remove



Site ID	Tree #	Street Name	House #	Loc	Pole #	Dia.	Species	# Stems	Defect Condition	Work Proposed
DC39	109	Flagg Rd	73	AF	40-41	42	Oak		Remove 10" limb back to main trunk. Limb more than 75% decline	Trim



Site ID	Tree #	Street Name	House #	Loc	Pole #	Dia.	Species	# Stems	Defect Condition	Work Proposed
DC40	110	Flagg Rd	77	AF	42-43	42	Oak		Weight over lines, more than 75% decline, one lead broke off leaving large cavity w/extensive decay	Remove



Site ID	Tree #	Street Name	House #	Loc	Pole #	Dia.	Species	# Stems	Defect Condition	Work Proposed
RK07	111	Ward Rd	5	AF	5-4	42	Maple		Extensive trunk decay	Remove



Site ID	Tree #	Street Name	House #	Loc	Pole #	Dia.	Species	# Stems	Defect Condition	Work Proposed
	113	Lattisquam a Rd	22		9-10	25	Maple		Cavities w/decay	Remove

